

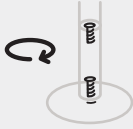
How to Totem



Small packaging
= Low Co2 emmission

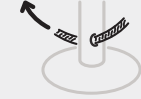
See other side
for instructions 

1



Assemble Totem parts
screw pole parts together

2



Attach sisal rope
pull rope trough bottom hole

3



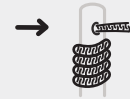
Tie a knot
on bottom part

4



Wrap rope
around the post

5



Push rope
trough top hole

6



Tie a knot
on top part

Enjoy your
Hopo®
Totem

Hopo®